



UPCOMING DATES

February

Fri 26 ECCS Swimming Y5-8

March

Mon 1-31 Walking School Bus
Month

Tue 2 FODS AGM

Fri 5 Easter Muffi Day

Mon 8–Fri 12 Y8 Camp

Mon 15 Teacher Only Day

Fri 19 Ride to School

Thurs 25 BOT Meeting

Mon 29 Learning Conversations

Tue 30 Easter Raffle Drawn

April

Fri 2 Good Friday

Mon 5 Easter Monday

Tue 6 Easter Holliday - school
closed

Fri 16 End of term 1

Community Notices

Karaka netball are looking for a couple more intermediate grade (year 7 & 8) players, if any girls or boys are interested please contact the club at karakanetballclub@gmail.co.nz.

Junior football at Drury Utd FC kicks off with a Club Muster Day on Sat 6th March.

We have qualified coaches and teams for players of all ages & experience. Check out www.druryfootball.co.nz for details.

Principal's Reflection

Dear Parents/Caregivers

Thank you for your support over the recent move to alert level 3 and then to level 2. We are becoming more and more adept at moving in and out of these levels, our plans are now well practiced and your cooperation to ensure the success of these is appreciated. While some of the routines at Level 2 may be frustrating, we are guided by Ministry of Health and our goal is to keep everyone in our community safe. Please keep yourself updated with locations of interest in the community as cases arise, if you have visited any of these places it is important that you self-isolate, get tested and await a negative result before returning to school.

It has been great to see many of our classes engaging with the inquiry focus this term on Kaitiakitanga. With a focus on marine conservation, classes are working on the 21 Day Young Ocean Explorers Challenge, joining thousands of other school children across Aotearoa to learn about how we can care for our marine environment. A big thank you to students who have been leading by example by picking up pieces of plastic that if left will end up in the ocean, a great example of our school value of RESPECT. We look forward to a visit from Riley Hathaway from Young Ocean Explorers later in the term as we celebrate Seaweek.

Good luck to all the Year 6-8 students who have been selected to participate in the ECCS Swimming Sports on Friday. Unfortunately, our school swimming sports were cancelled due to the change in Alert Levels, so it is great that this event is able to go ahead. We know you will do us proud, both through your participation but also your behaviour and support of others.

Ngā mihi nui

[Robyn Malcolm - Principal](#)

TEACHER ONLY DAYS

We have two scheduled teacher only days in Term 1 and term 2. The first of these is **Monday 15 March**, staff will be working with an external facilitator on a schoolwide resilience programme called Bounce Back on this day. We have been able to seek funding from the Ministry of Education to implement this programme within our school in the wake of the Covid 19 pandemic. We look forward to sharing more about this with you later in the year.

The second day is **Friday 4 June**, staff will be undertaking their bi-ennial first aid training which is an essential health and safety component of our jobs.

School will be closed for students on these days. sKids may operate for supervision of students on these days, please contact them if you wish to register your child with them. Drury@skids.co.nz or 0272087171.

LEARNING CONVERSATIONS

We will be holding Learning Conversations (Three Way Conferences) on Monday 29 March between 2:20pm and 7:20pm. School will finish at 2pm on this day. We look forward to meeting with you and your children to discuss their start to school this year. Bookings will be open via the School Interviews site next week.

FAREWELL MRS LEA

Today we sadly farewell Mrs Mary Lea, our school librarian. Mary has made the decision to retire after more than 25 years at Drury School. Mary's family have a long connection with Drury School and we will all miss her as part of our team. We wish her all the very best and hope she thoroughly enjoys her retirement.

EARLY NIGHTS NEEDED

We are noticing that the children are getting tired at the moment, this is likely to be due to the return to school after the holidays, the warm days and nights, and the busy-ness of summer lifestyles. Please try to ensure that your child is getting plenty of sleep so that they are best able to manage the school day.



COMMUNICATION WITH STAFF

Your first point of contact in relation to your child should be the class teacher. If you have questions or concerns you should raise them with your child's teacher, who will be able to answer questions relating to your child.

Email is the best way to contact class teachers, however, please be respectful of the working time of your child's teacher. Messages received after 4pm and over the weekend may not be responded to until the next working day.

STAFF CARPARK

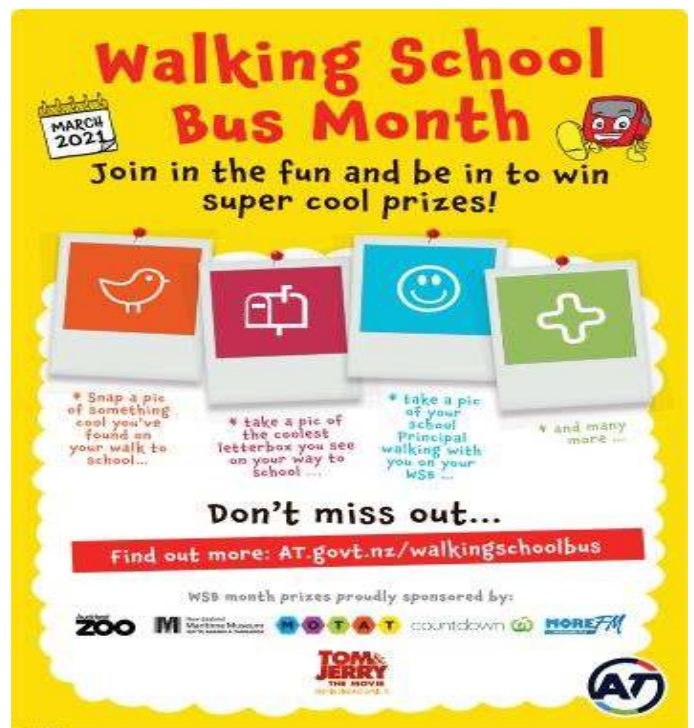
Please DO NOT use the carpark at the start and end of the day, other than for sKids drop off and pick up. **This is for staff parking only.** It is very dangerous to have students walking through the carpark area and there is limited room to turn in this space once staff have parked here. Staff are parking in this area to allow extra street parking for you to make use of. We understand that this is difficult due to roadworks at present, but we ask that you do your part to keep everyone safe.

WALKING SCHOOL BUS

Reminder of the days of the Walking School Bus. **Route 1** leaves from the corner of **Gatland Road and Great South Road** on Wednesday and Thursday mornings at 8.10am.

Route 2 leaves from the corner of **Waihoehoe Road and Fitzgerald Road** on Wednesday and Friday mornings at 8.10am.

March is also Walking School Bus Month, so if you would like to find out any more information about this, please go to the Auckland Transport website: <https://at.govt.nz/walkingschoolbus>





• SUBDIVISIONS
 • LAND SURVEY
 • LAND DEVELOPMENT
 • RESOURCE CONSENTS
 • PROJECT MANAGEMENT
 • STRUCTURAL ENGINEERING
 • ENVIRONMENTAL ENGINEERING

Dodd Civil Consultants Limited
 58 Broadway
 PO Box 72 043
 Papakura, Auckland 2244

Telephone:
09 296 5543

www.doddcivil.co.nz • admin@doddcivil.co.nz



Need a vet for your pet?



PAPAKURA | 365 Great South Rd | 09 298 8575
KARAKA | Unit A1, 75 Hingaia Rd | 09 298 7043

DRURY SURGERY
Phone 294 3005

NEW PATIENTS WELCOME
 Phone 2943005
 Fax 2948317
www.drurysurgery.co.nz

175 Great South Road Drury
 P O Box 19 Drury
 8am - 6pm Monday - Friday
 Closed Public Holidays and Weekends
 Intermittent phone calls divert to Homecare Medical

AUCKLAND SOUTH CHIROPRACTIC



1011 H and L Corner Grove Shops
 88 Whaka Simeone Drive,
 Corner Grove,
 Takaruna, Auckland

Focus on kids. Are you sick and tired of your kids being sick and tired?
Let us help you get your kids looking, feeling, and moving better.

Contact us and make a difference today!
 Call Tania on 298 5012 to book your appointment time.
reception@backmagicchiro.co.nz - www.backmagicchiro.co.nz



J. MARR PHYSIOTHERAPY
NO REFERRAL REQUIRED
Hours: 7am - 7pm Mon - Fri
www.jmarrphysio.co.nz
 Cnr Great South & Sutton Roads, Drury
Phone: 294-7062

Auckland Inground Pools Ltd

Kerry Richmond
 Mobile: 021 229 4459
Donna Richmond
 Mobile: 021 562 6209
 P: 09 294 7572
 PO Box 269 Drury 2247
Info@aucklandinground.co.nz
www.aucklandinground.co.nz

- Concrete Pool Construction
- Concrete Pool Renovation

Locally owned and operated
 20+ years experience




BEFORE & AFTER SCHOOL CARE
BEFORE CARE starts at 8:15am
 Includes breakfast and drop-off to school
AFTER CARE - Pick up from school to 6:00pm
 Includes after-school homework and activities
 Papakura Leisure Centre
 254 Great South Road, Papakura



Country Cafe
WINNER of 2014 Cafe of the Year



Red Shed Palazzo
WEDDINGS - BIRTHDAYS
 Breakfast/Lunch - 1st Floor
 OPEN 7 days 11am - 10pm
 16A/17A/18A/19A/20A/21A/22A
 091 294 6657



PROFARM
FARM MERCHANDISE
SUPPLIER OF

- * AGRICULTURE CHEMICALS
- * STOCK FOODS
- * ELECTRIC FENCING
- * GENERAL HARDWARE

AND MORE!!!
 18 Elliot St
 Papakura **PH 298 7767 FAX 298 1432**

LEARNING PLUS
cellfield
 Dyslexia and Processing Testing
 Cellfield Intervention
www.cellfield.com
Call Today: (09) 281 5421



Where the only result that matters is yours
 PROPERTY SALES, RENTALS,
 PROPERTY MANAGEMENT
 1/233 Great South Road, Drury
Phone 294 7500 • www.rwdrury.co.nz

ENROL NOW!
DRURY
 Opening hours 7AM - 6PM
 3 months to 6 years
 Meals & nappies provided
ph 294 6139 drury@bhnewzealand.co.nz




GFL Benelux *Crafted for Living*
 GFL Benelux create, install and install high quality, custom made countertops.
09 299 6237
www.gfl-benelux.co.nz

